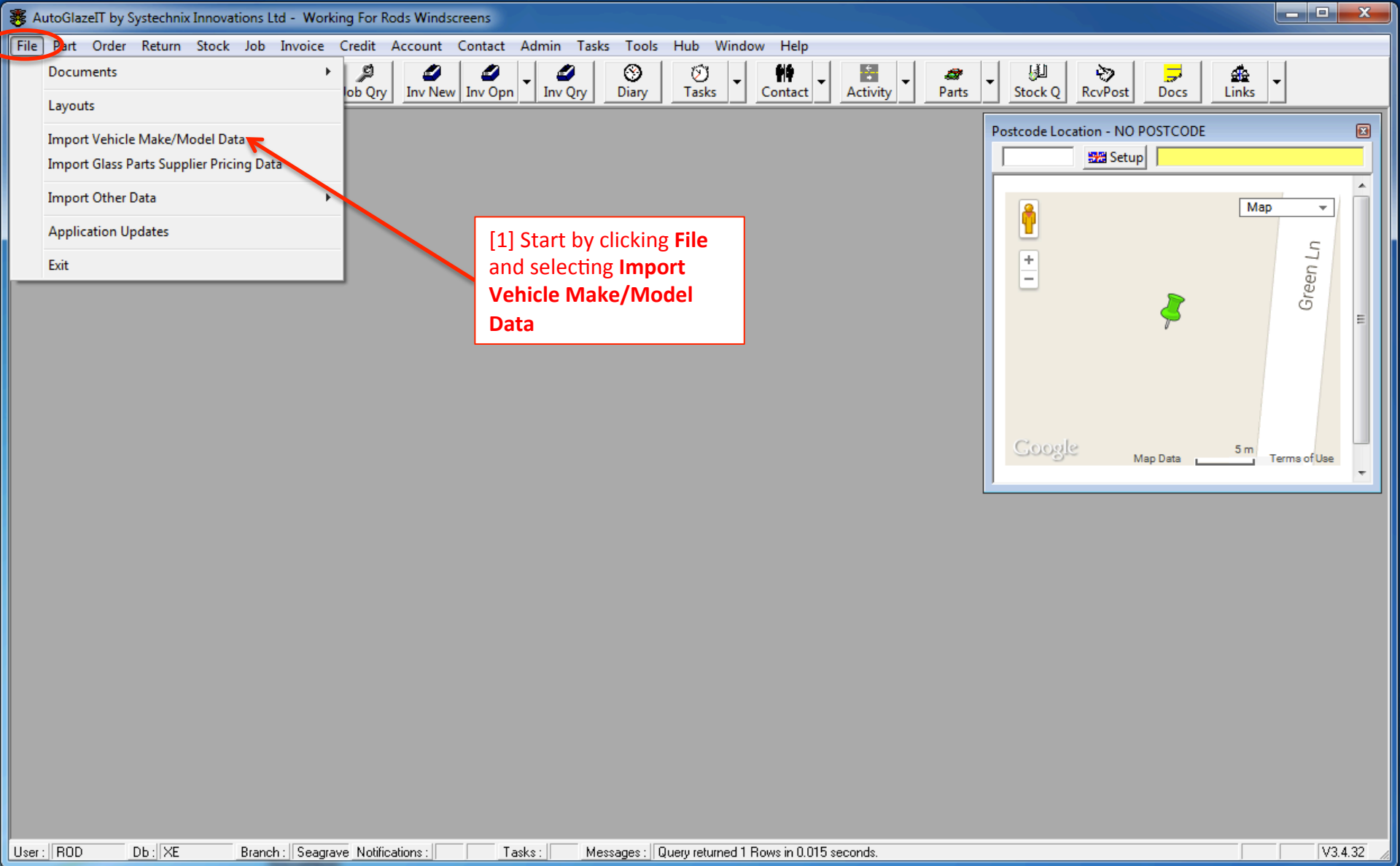
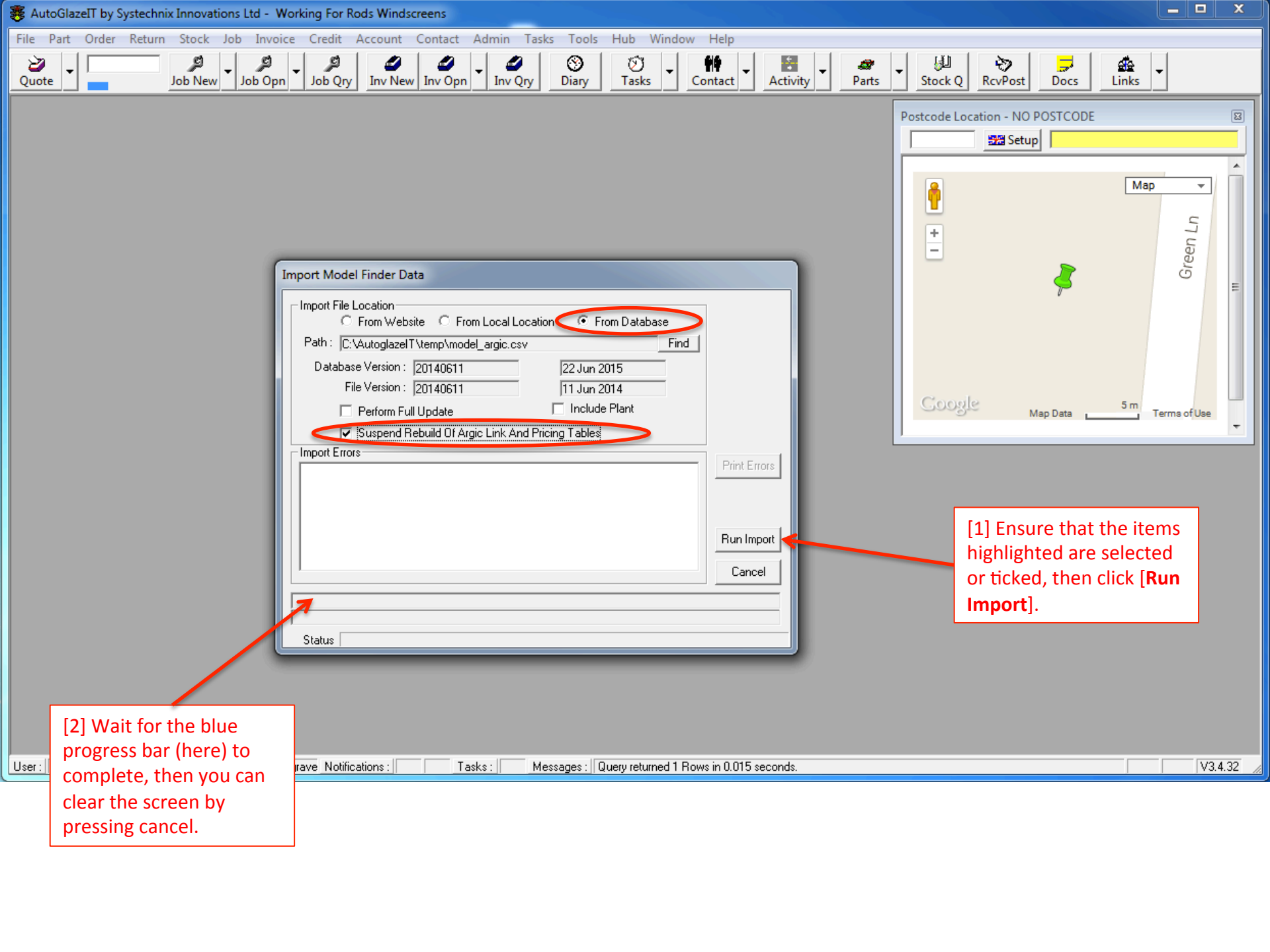


AUTOGLAZZEIT *Community*

Guide to Updating Models
And Part Codes



[1] Start by clicking File and selecting **Import Vehicle Make/Model Data**



Import Model Finder Data

Import File Location

From Website From Local Location From Database

Path: C:\AutoglazeIT\temp\model_argic.csv Find

Database Version: 20140611 22 Jun 2015

File Version: 20140611 11 Jun 2014

Perform Full Update Include Plant

Suspend Rebuild Of Argic Link And Pricing Tables

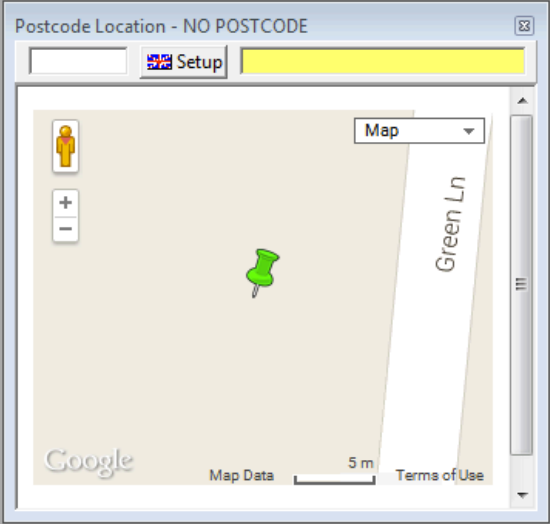
Import Errors

Print Errors

Run Import

Cancel

Status



[1] Ensure that the items highlighted are selected or ticked, then click [Run Import].

[2] Wait for the blue progress bar (here) to complete, then you can clear the screen by pressing cancel.

- Documents
- Layouts
- Import Vehicle Make/Model Data
- Import Glass Parts Supplier Pricing Data
- Import Other Data
- Application Updates
- Exit

Job Qry Inv New Inv Opn Inv Qry Diary Tasks Contact Activity Parts Stock Q RcvPost Docs Links

[1] Now click **File** again and select **Import Glass Parts Supplier Pricing Data**

Postcode Location - NO POSTCODE

Setup

Map

Green Ln

5 m

Map Data Terms of Use

Import Supplier ARGIC Part Codes And Prices

Options:
 Import Parts/Prices Rebuild Argic Tables / Descriptions Only

Supplier Account
A/c: **ARGIC**
Ladshaw Limited
Pilkington
Charles Pugh Glass Limitd
Master Autoglass Ltd

Import F
Path:
Data File

Import E

New Cancel Select

Print Errors

Run Import
Cancel

Status Inet

Postcode Location - NO POSTCODE

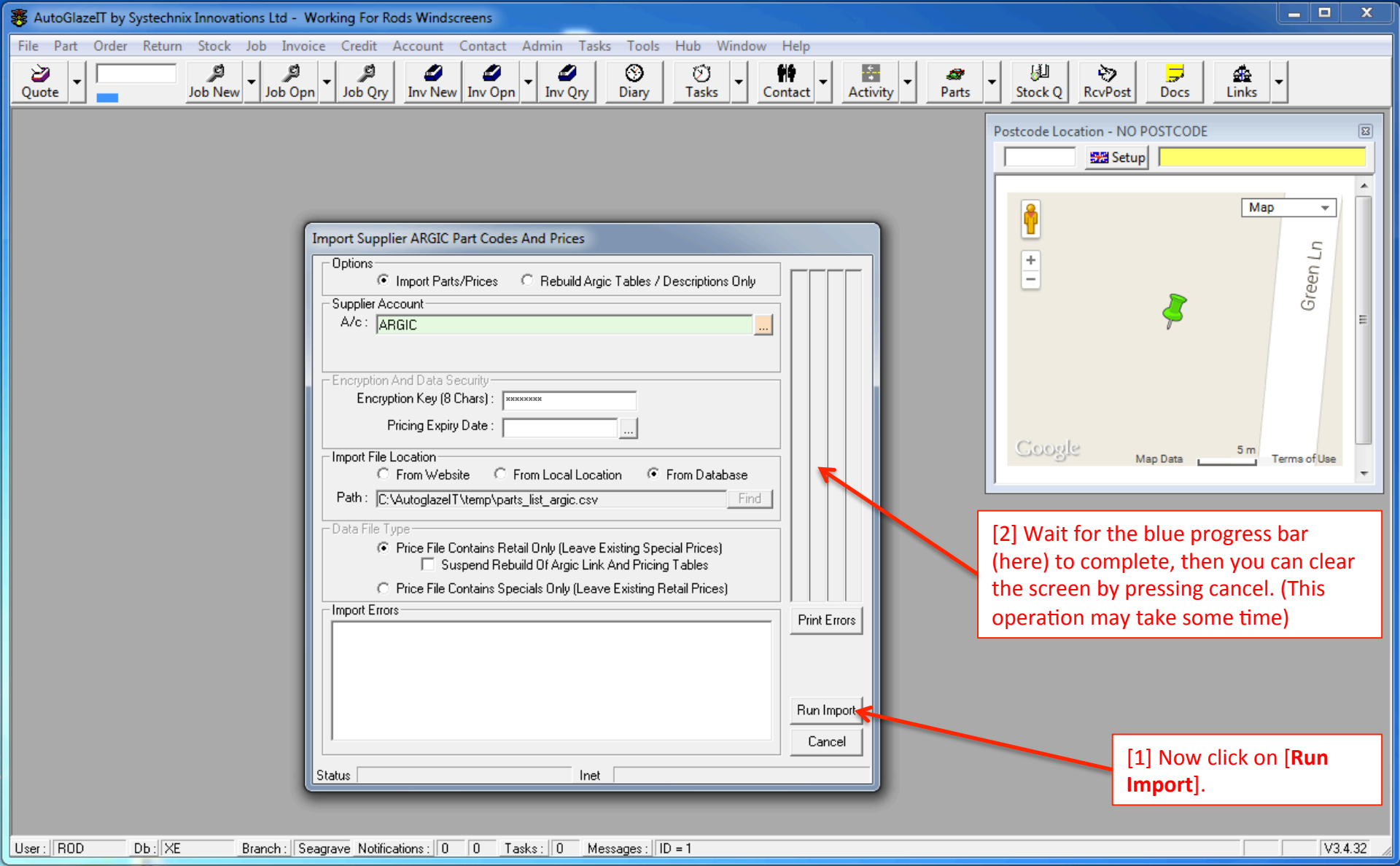
Setup

Map

Green Ln

Google Map Data 5 m Terms of Use

[1] Select **Import Parts/Prices** and then select **ARGIC** from the **A/c** drop down box before clicking on **Select**.



Make the most of your **AUTOGLAZEIT** system

Contact Us

- Office +44 (0) 1 509 817 313
- sales@systechnix.co.uk
- Rod +44 (0) 7 921 709 425
- rod@autoglazeit.co.uk
- John +44 (0) 7 979 693 066
- john@autoglazeit.co.uk
- Nick +44 (0) 7 799 897 732
- nick@autoglazeit.co.uk

